



Aria
wood panel version



Aria

wood panel version

Nuovi pannelli in legno da tappezzare per la panca Aria. da sempre sinonimo di resistenza e funzionalità.

Facili da tappezzare e da assemblare alla seduta, i pannelli imbottiti per schienale e seduta rendono la panca in metallo ancora più comoda e adatta a tutte le esigenze di attesa.



Designed by:
IVANO DALLA VAL



ENG

New wooden panels to upholster for the strong, functional Aria bench.

Easily upholstered and assembled to the seat, padded panels for backrests and seats make this metal bench even more comfortable and suitable for all types of waiting areas.

ESP

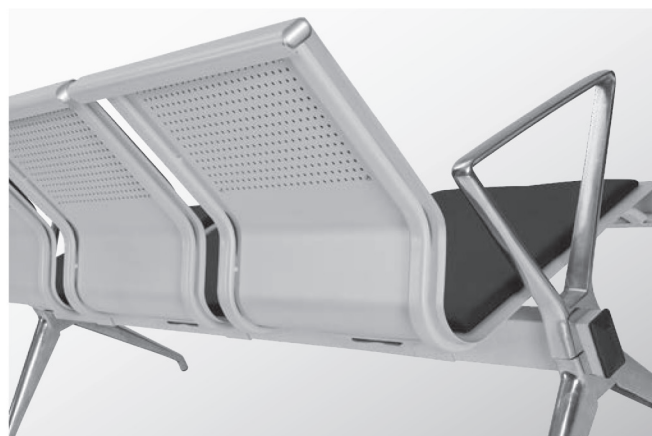
Nuevos paneles de madera tapizables para el banco Aria, un sinónimo de resistencia y funcionalidad desde siempre.

Los paneles, acolchados en respaldos y asientos, son fáciles de tapizar y, con éstos, el banco de metal resulta aún más cómodo y apto para todas las exigencias de espera.

FRA

Nouveaux panneaux en bois à habiller pour le banc Aria, depuis toujours synonyme de résistance et fonctionnalité.

Faciles à tapisser et à assembler à l'assise, les panneaux rembourrés pour dossier et assise rendent le banc en métal encore plus confortable et adapté à toutes les exigences des salles d'attente.







ENG

With the addition of armrests and aluminium legs Aria is an elegant, versatile choice for top quality contract projects.

ESP

Con el añadido de los apoyabrazos y las patas de aluminio, Aria se convierte en una elección elegante y versátil con estándares elevados de calidad para el sector contract.

FRA

L'ajout des accoudoirs et des pieds en aluminium font d'Aria le choix élégant et versatile à la qualité haut-de-gamme.

L'aggiunta dei braccioli e delle gambe in alluminio, fanno di Aria una scelta contract elegante e versatile, dagli standard qualitativi elevati.



CUT&SLIM leg solutions



90GM leg solutions



200GM leg solutions



leg and armrest solutions



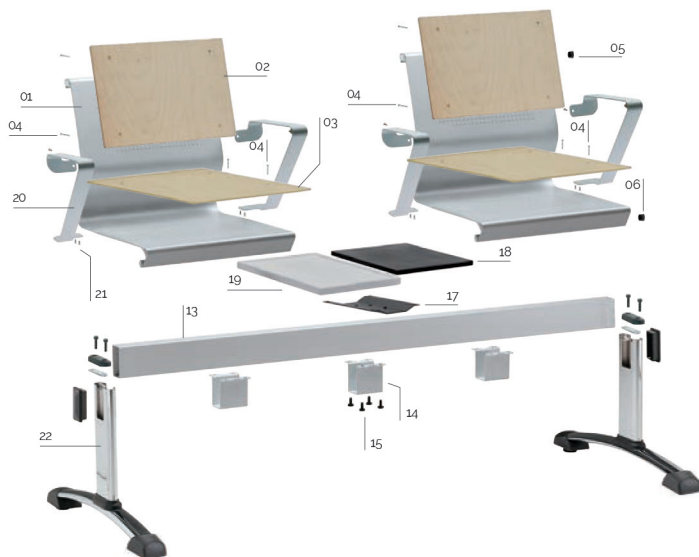
table solutions



metal



MDF



01 - ARIA-SCOCCA INTERA IN LAMIERA
ARIA-SHELL METAL SHEET

CODE	FINISHING	NOTE	KIT	PACK	WT.X1	UNITVOL.
110703-065	● NERO/BLACK		x1	25	10,50	mc. 0,02
110703-066	● NERO/BLACK	FORI X BRACC./HOLES FOR ARM.	x1	25	10,50	mc. 0,02
110704-025	● GRIGIO/GREY		x1	25	10,50	mc. 0,02
110704-027	● GRIGIO/GREY	FORI X BRACC./HOLES FOR ARM.	x1	25	10,50	mc. 0,02

02 - ARIA-SHL-PANNELLINO SCHIENALE IN LEGNO
ARIA-SHL-PLYWOOD BACK PANEL FOR UPHOLSTERY

CODE	FINISHING	KIT	PACK	WT.X1	UNITVOL.
122107-007	● FAGGIO/PLYWOOD	x1	20	0,45	mc. 0,00225

03 - ARIA-SDL-PANNELLINO SEDILE IN LEGNO
ARIA-SDL-PLYWOOD SEAT PANEL FOR UPHOLSTERY

CODE	FINISHING	KIT	PACK	WT.X1	UNITVOL.
122207-007	● FAGGIO/PLYWOOD	x1	20	0,735	mc. 0,00225

04 - VITE TBEI M4X8 ZINCATA BIANCA
SCREW TBEI M4X8 WHITE ZINC

CODE	FINISHING	KIT
117703-126	○ ZINCATA BIANCA/WHITE ZINC	x4

05 - TAPPO COPRITESTA OVALE 40x20 TESTA CROMATA
COVER HEAD 40X20 OVAL CHROME

CODE	FINISHING	KIT
134110-001	● CROMATO/CHROME	x2

06 - TAPPO COPRITESTA D.20 TESTA CROMATA
COVER HEAD D.20 CHROME

CODE	FINISHING	KIT
134110-200	● CROMATO/CHROME	x2

07 - NEXUS-CUT-BRACCIOLO IN ALLUMINIO PER PANCA + N°2 VITI
NEXUS-CUT-ALUMINIUM ARM FOR BENCH + N°2 SCREW

CODE	FINISHING	KIT	PACK	WT.X1	UNITVOL.
111704-223	● ALLUMINIO/ALUMINIUM	x1	10	1,40	mc. 0,0011

08 - NEXUS-SLIM-BRACCIOLO IN ALLUMINIO PER PANCA + N°2 VITI
NEXUS-SLIM-ALUMINIUM ARM FOR BENCH + N°2 SCREW

CODE	FINISHING	KIT	PACK	WT.X1	UNITVOL.
111704-225	● ALLUMINIO/ALUMINIUM	x1	10	1,40	mc. 0,0011

09 - NEXUS-CUT/SLIM-CAVALLOTTO IN ALLUM. PER GAMBA PANCA + N°2 VITI
NEXUS-CUT/SLIM-ALUM. BRACKET 80X40 FOR BENCH LEG + N°2 SCREW

CODE	FINISHING	KIT	PACK	WT.X1	UNITVOL.
111704-222	● ALLUMINIO/ALUMINIUM	x1	10	0,40	mc. 0,0012

10 - NEXUS-SLIM-GAMBA IN ALLUMINIO PER PANCA
NEXUS-SLIM-ALUMINIUM LEG FOR BENCH

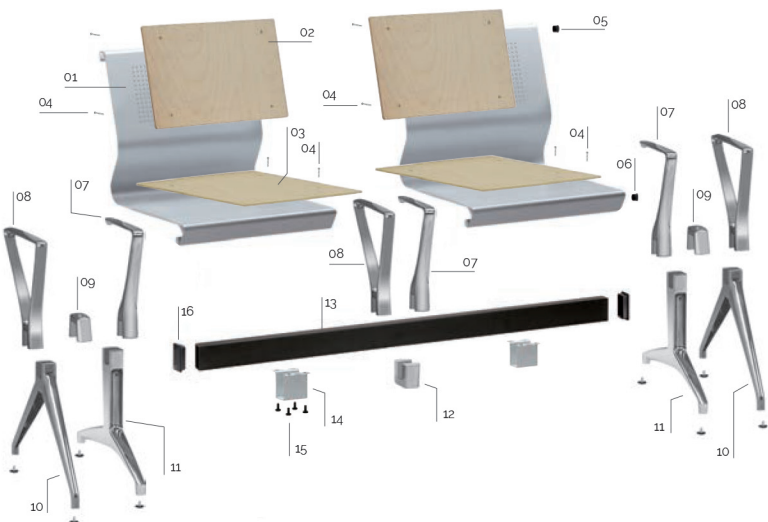
CODE	FINISHING	KIT	PACK	WT.X1	UNITVOL.
111704-226	● ALLUMINIO/ALUMINIUM	x2	5	1,20	mc. 0,014

11 - NEXUS-CUT-GAMBA IN ALLUMINIO PER PANCA
NEXUS-CUT-ALUMINIUM LEG FOR BENCH

CODE	FINISHING	KIT	PACK	WT.X1	UNITVOL.
111704-224	● ALLUMINIO/ALUMINIUM	x2	5	2,55	mc. 0,014

12 - NEXUS-CUT/SLIM-CAVALLOTTO IN ALLUMINIO PER BRACCIOLO PANCA
NEXUS-CUT/SLIM-ALUMINIUM BRACKET 80X40 FOR BENCH ARM

CODE	FINISHING	KIT	PACK	WT.X1	UNITVOL.
111704-221	● ALLUMINIO/ALUMINIUM	x1	10	0,32	mc. 0,0012



13 - 90T(03) BEAM FOR BENCH 80X40
90T(03) BEAM FOR BENCH 80X40

CODE	FINISHING	NOTE	KIT	PACK	WT.X1	UNITVOL.	LENGHT
110703-190	● NERO/BLACK	2 POSTI/2 SEATS	x1	1	3,20	mc. 0,0045	1160
110704-090	● GRIGIO/GREY	2 POSTI/2 SEATS	x1	1	3,20	mc. 0,0045	1160
110703-191	● NERO/BLACK	3 POSTI/3 SEATS	x1	1	4,71	mc. 0,005	1710
110704-091	● GRIGIO/GREY	3 POSTI/3 SEATS	x1	1	4,71	mc. 0,005	1710
110703-192	● NERO/BLACK	4 POSTI/4 SEATS	x1	1	6,22	mc. 0,0085	2260
110704-092	● GRIGIO/GREY	4 POSTI/4 SEATS	x1	1	6,22	mc. 0,0085	2260
110703-193	● NERO/BLACK	5 POSTI/5 SEATS	x1	1	7,72	mc. 0,01	2800
110704-193	● GRIGIO/GREY	5 POSTI/5 SEATS	x1	1	7,72	mc. 0,01	2800

14 - 90CV-CAVALLOTTO SOTTOTRAVE
90CV-SUPPORT UNDER BEAM

CODE	FINISHING	KIT	PACK	WT.X1	UNITVOL.
110703-007	● NERO/BLACK	x1	50	0,60	mc. 0,0005
110704-016	● GRIGIO/GRAY	x1	50	0,60	mc. 0,0005

15 - CONFEZIONE VITI M8X12 TESTA CILINDRICA A ESAGONO INCASSATO BRUNITA NERA
SCREWS M8X12 CYLINDRICAL HEAD HEXAGON EMBEDDED BURNISHING BLACK PACKAGE

CODE	FINISHING	KIT	PACK
117003-070	● NERO/BLACK	x4	200

16 - TAPPO COPRITESTA RETTANGOLARE 80x40 NERO
RECTANGULAR COVER HEAD CAP 80X40 BLACK

CODE	FINISHING	KIT
134103-001	● NERO/BLACK	x2

17 - 90AP-ATTACCO PORTA PIANO
90AP-TABLE ATTACHMENT

CODE	FINISHING	KIT	PACK	WT.X1	UNITVOL.
110703-014	● NERO/BLACK	x1	25	1,00	mc. 0,002

18 - 90TN-PIANO TAVOLO PER PANCA
90TN-TABLE FOR BENCH

CODE	FINISHING	KIT	PACK	WT.X1	UNITVOL.
120303-001	● NERO/BLACK	x1	10	2,20	mc. 0,002

19 - ARIA-TAVOLO PER PANCA IN LAMIERA
ARIA-METAL SHEET FOR BENCH

CODE	FINISHING	KIT	PACK	WT.X1	UNITVOL.
110703-069	● NERO/BLACK	x1	25	5,50	mc. 0,01
110704-030	● GRIGIO/GRAY	x1	25	5,50	mc. 0,01

20 - ARIA-BRACCIOLO IN METALLO PER SCOCCA
ARIA-METAL ARM FOR SHELL

CODE	FINISHING	NOTE	KIT	PACK	WT.X1	UNITVOL.
110703-001	● NERO/BLACK	DESTRO/RIGHT	x1	5	1,68	mc. 0,02
110703-002	● NERO/BLACK	SINISTRO/LEFT	x1	5	1,68	mc. 0,02
110704-001	● GRIGIO/GREY	DESTRO/RIGHT	x1	5	1,68	mc. 0,02
110704-002	● GRIGIO/GREY	SINISTRO/LEFT	x1	5	1,68	mc. 0,02

21 - VITE TESTA BOMBATA ESAGONO INCASSATO M6X14 ZINCATA
SCREW M6X14 HEAD HEXAGON EMBEDDED ZINC

CODE	FINISHING	KIT
117711-185	○ ZINCATA/ZINC	x3

22 - 90GM-GAMBA MOBILE PER PANCA CON ACCESSORI
90GM-MOVABLE LEG FOR BENCH WITH ACCESSORIES

CODE	FINISHING	KIT	PACK	WT.X1	UNITVOL.
110703-005	● NERO/BLACK	x2	2	2,70	mc. 0,012
110704-002	● GRIGIO/GREY	x2	2	2,70	mc. 0,012
110710-001	● CROMATO/CHROME	x2	2	2,70	mc. 0,012

Основной склад: г. Санкт-Петербург,
пос. Парголово, ул. Подгорная, д.6
(въезд с ул. Железнодорожной, д.11)
тел. 8 (812) 242 80 99

График работы: Пн-Пт, с 9.00 до 18.00

8 (800) 333 06 22 доб. 130, 230 (бесплатно по России)

8 (812) 643 42 66 доб. 130, 230 (Санкт-Петербург)

Моб.: 8 (981) 771 34 84 (отдел продаж)

sales@italseat.ru (отдел продаж)

www.italseat.ru

